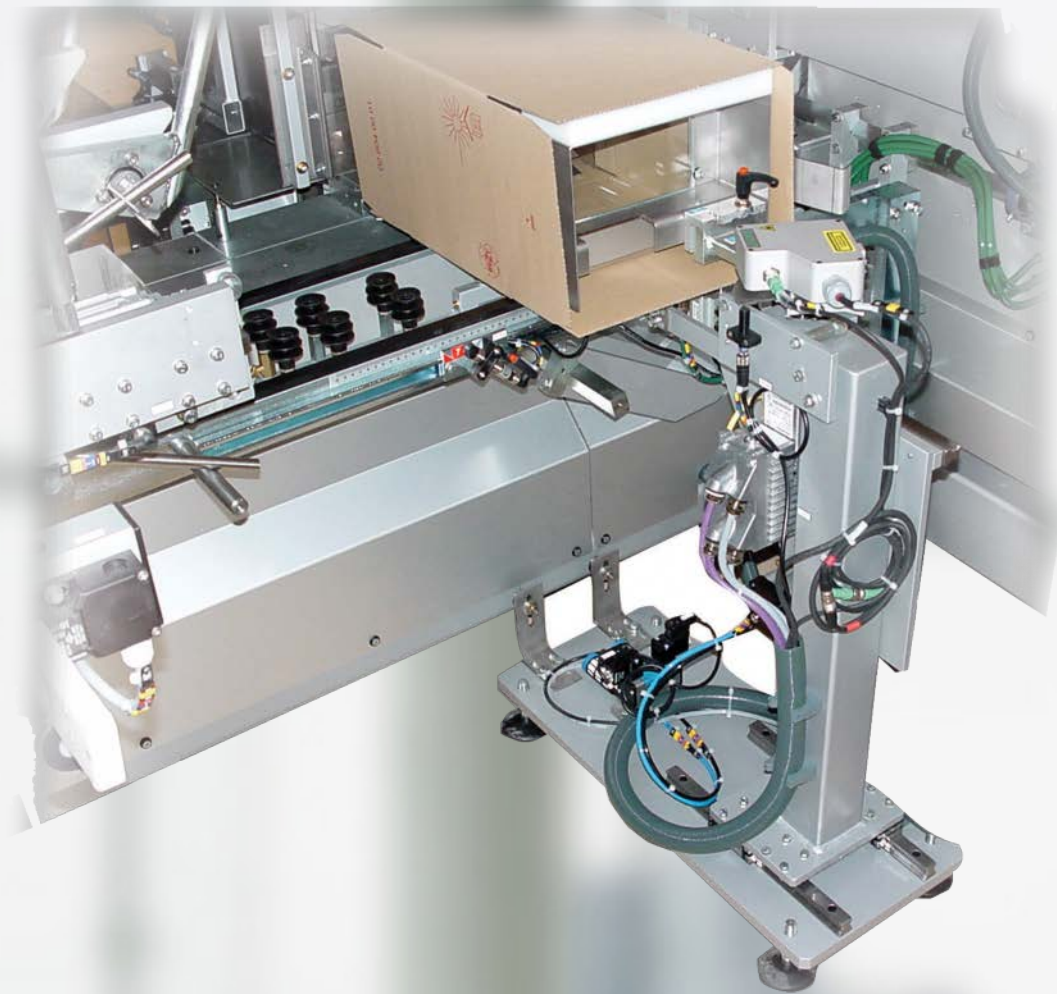
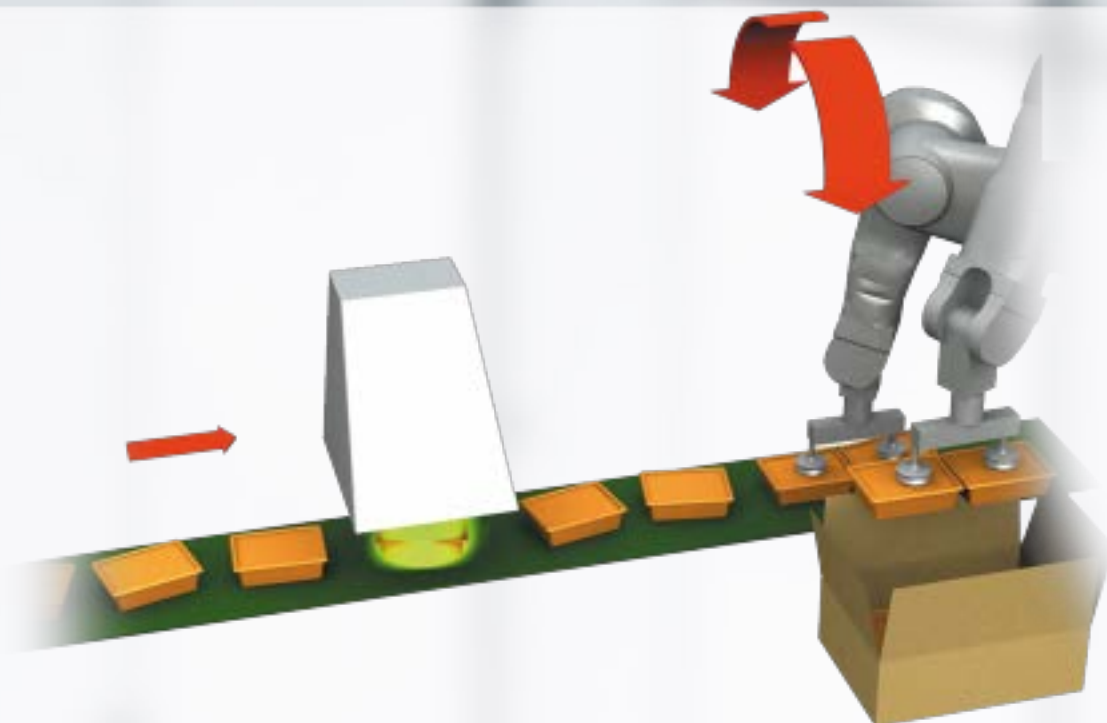


Vision

Industrial System adapted to the Cermex Case Packing Range



- Speed: 120 products/min
- Robust and reliable
- Easy to adapt to a new product
- Associating robot guiding functions with quality control functions



A vision solution for case packing applications to meet your specific requirements:



FUNCTIONALITIES

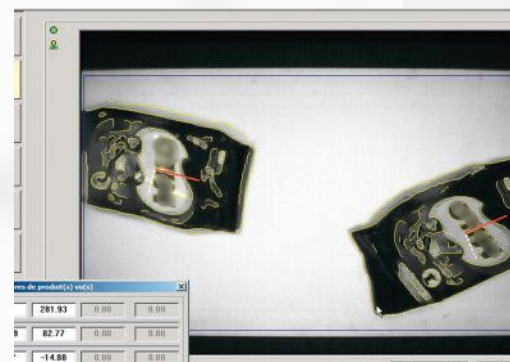
- The vision system ascertains, on-the-fly, the product position and orientation on the conveyor, then transfers its coordinates (x, y and rotation) to the case packing robot
- It also identifies whether the product is right side up and detects appearance defects (dimensions, colour, leakage) as well as the presence and position of markings (expiry date, promotional sticker, etc.)
- Presence of a cap, a leaflet in the case and the correct number of products in the case

PERFORMANCE

- Insensitive to light intensity variations
- Tolerant to geometrical distortions (flexible packaging)
- Rapid: < 40 milliseconds for an object and two sides

ERGONOMICS

- Programming of controls by training outside production (work on or off line)
- Remote maintenance possible
- Simple and ergonomic user interface



First in line

Cermex
87, route de Seurre - B.P.3 - 21910 Corcelles-lès-Cîteaux - France
Tél. : +33 (0) 380 707 100

Gebo Cermex Headquarters
Rue du Commerce, CS 73455 Reichstett - 67455 Mundolsheim - France
Tél. : +33 (0) 388 183 850

contact.us@gebocermex.com

www.gebocermex.com

