

SIDEL SPA POLICY



*Performance
through
Understanding*





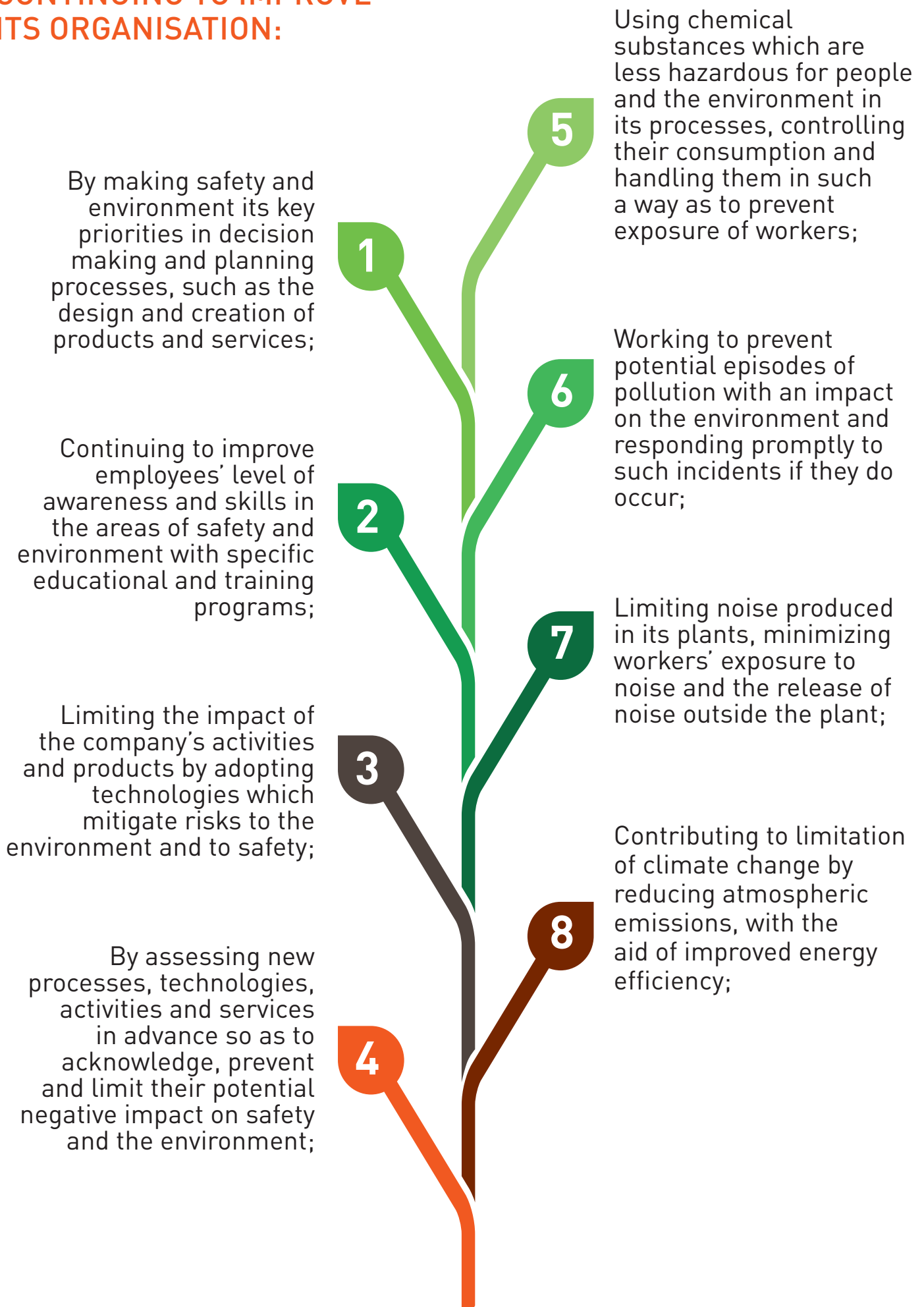
SIDEL S.P.A. BELIEVES THAT **“PROTECTION OF THE ENVIRONMENT AND EMPLOYEES”** HEALTH AND SAFETY ARE ESSENTIAL FACTORS IN THE CREATION OF QUALITY PRODUCTS AND SERVICES FOR CUSTOMERS.

This is why, in line with the Group’s commitments, Management establishes its policies, goals, plans and procedures for the pursuit of excellence in the areas of environment and safety and is committed to ongoing improvement of its performance.

Protection of the environment and of the health and safety of workers and all stakeholders, compliance with current legislation, understanding of the demands of all internal and external stakeholders, cooperation with the authorities and with local communities are the key principles inspiring everyone who works with us in their everyday activities.



SIDEL S.P.A. TAKES A PROACTIVE APPROACH, COMMITTED TO CONTINUING TO IMPROVE ITS ORGANISATION:



Limiting production of wastes of all kinds wherever possible, starting at the source, in all stages in processing, preferring re-use, recycling and reclamation of raw materials as final treatments;

Monitoring the performance of processes through qualitative and quantitative parameters, through systematic analysis of environmental impact and assessment of the safety of the activities performed by its employees and suppliers;

Ensuring correct behavior in the areas of environment and safety on the part of suppliers and other companies working on behalf of the organization, in line with the organization's practices and procedures;

Working to publicize the company's commitment to responsible environmental management.

Working to reduce injuries and accidents, also by collecting and analyzing reports on all incidents and unsafe actions and conditions, to identify the causes of potentially hazardous events;

Working to increase all employees' awareness of issues pertaining to protection of the environment, health and safety in the workplace, encouraging awareness of safety at all levels in the organization and drawing attention to the importance of prevention;

Working to involve and consult workers, through their representatives for safety.

